

**FOR
LEASE**

1,000 SF - 7,600 SF | Yucaipa, CA | Professional & Medical Office Suites

Presented by Strata Realty | www.stratarealty.com | T (951)280-1733 | F (951) 280-1739**1,000 SF - 7,600 SF PROFESSIONAL & MEDICAL OFFICE SUITES****Location**34675 Yucaipa Blvd.
Yucaipa, CA 92399**Features**

- Separately metered
- Private rest rooms inside suites
- Peaceful courtyard garden
- 4:1 parking ratio
- Major street frontage
- Nearby shopping centers and retail amenities
- Professionally managed
- Broker Co-Op
- Brand new roof completed in January 2016
- Brand new HVAC units installed January 2016
- Brand new monument and interior directory sign completed January 2016

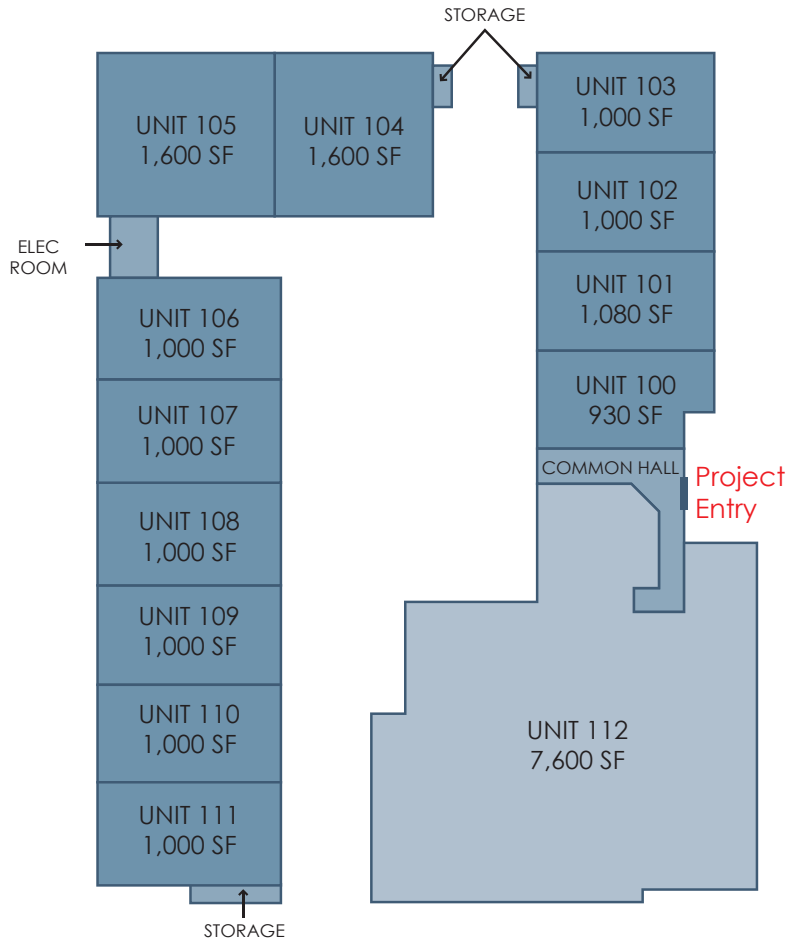
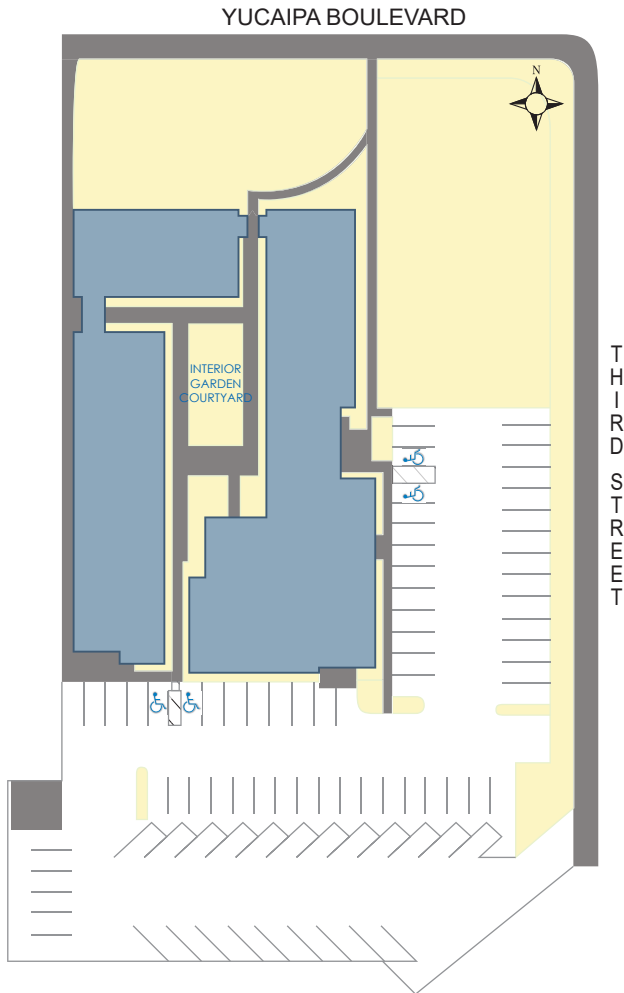
**Contact:****Timothy Hawke, SIOR**(951) 280-1733 | thawke@stratarealty.com**Tabitha Smith, Property Manager**(951) 280-1733 | tsmith@stratarealty.com

**FOR
LEASE**

1,000 SF - 7,600 SF | Yucaipa, CA | Professional & Medical Office Suites

Contact: Timothy Hawke | T (951) 280-1733

SITE MAPS



= Available = Not Available